



**Your trip plan for Iceland**  
**Lodging**

## *Table of contents*

Overview map of trip . . . . .	3
A. CenterHotel Plaza . . . . .	4
B. Country Hotel Hofdabrekka . . . . .	4
C. Hostel Akraness . . . . .	4
D. Hostel Berg . . . . .	4
E. Hostel Bíldudal . . . . .	4
F. Hostel Árnes . . . . .	5
G. Hostel Ásbyrgi . . . . .	5
H. Hostel Borgarnes . . . . .	5
I. Farfuglaheimilið Sjónarhóll . . . . .	5
J. Hostel Stórholt . . . . .	5
K. Fosshotel Skaftafell . . . . .	6
L. Gaulverjaskóli Hostel . . . . .	6
M. Hilton Reykjavik Nordica . . . . .	6
N. Hostel Berunes . . . . .	6
O. Hotel Björk . . . . .	7
P. Hotel Edda Akureyri . . . . .	7
Q. Hotel Hamar . . . . .	7
R. Hotel Hallormsstadur . . . . .	7
S. Hotel KEA . . . . .	7
T. Hótel Stykkishólmur . . . . .	8
U. Hotel Vík . . . . .	8
V. Húsadalur . . . . .	8
W. Húsafell . . . . .	8
X. Icelandair Hotel Klaustur . . . . .	8
Y. Landmannalaugar . . . . .	9
Z. Reykjavik Hostel . . . . .	9
1. Sandártunga . . . . .	9
2. Skaftafell National Park . . . . .	9
Practical info . . . . .	10
Travellers Reporting Service . . . . .	10

## Overview map of trip



A. - CenterHotel Plaza	B. - Country Hotel Hofdabrekka	C. - Hostel Akraness	D. - Hostel Berg
E. - Hostel Bíldudal	F. - Hostel Árnes	G. - Hostel Ásbyrgi	H. - Hostel Borgarnes
I. - Farfuglaheimilið Sjónarhóll	J. - Hostel Stórholt	K. - Fosshotel Skaftafell	L. - Gaulverjaskóli Hostel
M. - Hilton Reykjavik Nordica	N. - Hostel Berunes	O. - Hotel Björk	P. - Hotel Edda Akureyri
Q. - Hotel Hamar	R. - Hotel Hallormsstadur	S. - Hotel KEA	T. - Hótel Stykkishólmur
U. - Hotel Vík	V. - Húsadalur	W. - Húsafell	X. - Icelandair Hotel Klaustur
Y. - Landmannalaugar	Z. - Reykjavik Hostel	1. - Sandártunga	2. - Skaftafell National Park

---

## A. CenterHotel Plaza

**GPS:** (64.148269, -21.9417)

**Category:** Hotels

**Address:** Aðalstræti 4, 101 Reykjavík.



CenterHotel Plaza

On the Ingólfstorg square in the heart of the old city is CenterHotel Plaza, perfectly situated for enjoying all that Reykjavik has to offer. Stay right next to numerous restaurants, shopping and nightlife.

---

## B. Country Hotel Hofdabrekka

**GPS:** (63.42691, -18.90518)

**Category:** Hotels

**Address:** Höfðabrekku, 871 Vík.



Country Hotel Hofdabrekka

In the beautiful vicinity of Vík in Myrdal, occupying a scenic countryside location is Country Hotel Hofdabrekka, offering comfortable accommodation in 4 separate buildings.

---

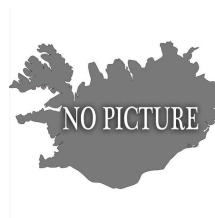
## C. Hostel Akraness

**GPS:** (64.3153, -22.087)

**Category:** Hostels

**Address:** Suðurgata 32, 300 Akranes.

**Tel.** 868 3332 **Web.** [http://www.hostel.is/extern.asp?cat\\_id=729](http://www.hostel.is/extern.asp?cat_id=729)



Hostel Akraness

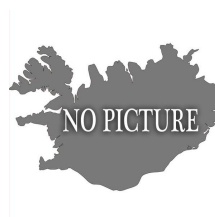
## D. Hostel Berg

**GPS:** (65.956, -17.5458)

**Category:** Hostels

**Address:** Aðaldal, 641 Húsavík.

**Web.** [http://www.hostel.is/extern.asp?cat\\_id=788](http://www.hostel.is/extern.asp?cat_id=788)



Hostel Berg

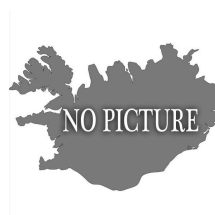
## E. Hostel Bíldudal

**GPS:** (65.6853, -23.5999)

**Category:** Hostels

**Address:** Hafnarbraut 2, 465 Bíldudalur.

**Web.** [http://www.hostel.is/extern.asp?cat\\_id=586](http://www.hostel.is/extern.asp?cat_id=586)



Hostel Bíldudal

---

## F. Hostel Árnes

*GPS: (64.0427, -20.2515)*

*Category: Hostels*

*Address: [http://www.hostel.is/extern.asp?cat\\_id=47](http://www.hostel.is/extern.asp?cat_id=47),*



Hostel Árnes

---

## G. Hostel Ásbyrgi

*GPS: (65.5274, -13.8174)*

*Category: Hostels*

*Address: 720 Borgarfjörður Eystri.*

*Tel. 472 9962 Web. [http://www.hostel.is/extern.asp?cat\\_id=38](http://www.hostel.is/extern.asp?cat_id=38)*



Hostel Ásbyrgi

---

## H. Hostel Borgarnes

*GPS: (64.53809, -21.9212)*

*Category: Hostels*

*Address: Borgarbraut 9-13, 310 Borgarnes.*

*Web. [http://www.hostel.is/extern.asp?cat\\_id=730](http://www.hostel.is/extern.asp?cat_id=730)*



Hostel Borgarnes

---

## I. Farfuglaheimilið Sjónarhóll

*GPS: (65.07619, -22.72796)*

*Category: Hostels*

*Address: Höfðagata 1,*

*Tel. +354 438 1417 Web. <http://www.hostel.is>*



Farfuglaheimilið Sjónarhóll

---

## J. Hostel Stórholt

*GPS: (65.6911, -18.1062)*

*Category: Hostels*

*Address: Stórholt 1, 600 Akureyri.*

*Web. [http://www.hostel.is/extern.asp?cat\\_id=34](http://www.hostel.is/extern.asp?cat_id=34)*



Hostel Stórholt

---

## K. Fosshotel Skaftafell

**GPS:** (63.99012, -16.89251)

**Category:** Hotels

**Address:** Freysnesi, 785 Öraefi.



Fosshotel Skaftafell

The amazing location of Fosshotel Skaftafell provides guests with stunning views of Iceland's highest mountain, Hvannadalshnjukur and the largest glacier in Europe, Vatnajökull.

---

## L. Gaulverjaskóli Hostel

**GPS:** (63.83619, -20.8938)

**Category:** Hostels

**Tel.** 551-0654 **Web.** <http://www.south-hostel.is>



Gaulverjaskóli Hostel

Gaulverjaskóli Hostel is in a renovated school in the low-lying agricultural region of south Iceland. The hostel has a well equipped guest kitchen, dining room and comfortable rooms. Gaulverjaskóli is a convenient place to stay for those who want to explore the nature pearls in the South, both inland such as Þórsmörk, Landmannalaugar, Gullfoss and Geysir and along the South shore. There are short hiking trails close to the hostel, excellent for those interested in birdlife.

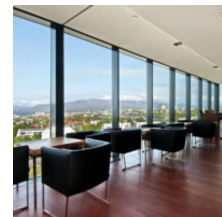
---

## M. Hilton Reykjavik Nordica

**GPS:** (64.139786, -21.88918)

**Category:** Hotels

**Address:** Sudurlandsbraut 2, 108 Reykjavík.



Hilton Reykjavik Nordica

Hilton Reykjavik Nordica is located in Reykjavik's business district, 15 minutes' walk from the city centre. It offers a free shuttle bus to central Reykjavik as well as free parking.

---

## N. Hostel Berunes

**GPS:** (64.6996, -14.25425)

**Category:** Hostels

**Web.** [http://www.hostel.is/extern.asp?cat\\_id=40](http://www.hostel.is/extern.asp?cat_id=40)



Hostel Berunes

---

## O. Hotel Björk

**GPS:** (64.14138, -21.9041)

**Category:** Hotels

**Address:** Brautarholt 22-24, 104 Reykjavík.



Hotel Björk

If you are looking for a centrally located hotel and would still prefer peace and privacy, Hotel Björk is the right choice for you.

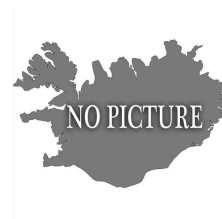
---

## P. Hotel Edda Akureyri

**GPS:** (65.67663, -18.0963)

**Category:** Hotels

**Address:** Hrafnagilstraeti, 600 Akureyri.



Hotel Edda Akureyri

---

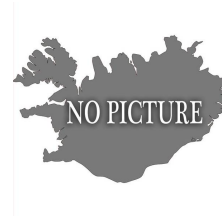
## Q. Hotel Hamar

**GPS:** (64.57358, -21.8779)

**Category:** Hotels

**Address:** Hamri, 310 Borgarnes.

**Tel.** 4336600



Hotel Hamar

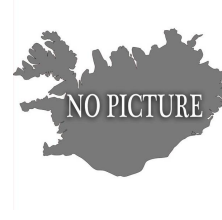
Amid some of Iceland's most dramatic landscapes, the hotel is not only ideal for keen golf enthusiasts, but is also a great base for other leisure pursuits such as hiking, fishing and horse riding.

---

## R. Hotel Hallormsstadur

**GPS:** (65.0934, -14.7459)

**Category:** Hotels



Hotel Hallormsstadur

---

## S. Hotel KEA

**GPS:** (65.68064, -18.0895)

**Category:** Hotels

**Address:** Hafnarstræti 87-89, 600 Akureyri.



Hotel KEA

The best known hotel in Akureyri. It's situated in the town center.

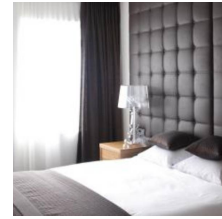
---

## T. Hótel Stykkishólmur

**GPS:** (65.07267, -22.72483)

**Category:** *Hotels*

**Address:** *Borgarbraut 8, 340 Stykkisholmur.*



Hótel Stykkishólmur

This seaside hotel in the fishing village of Stykkisholmur is conveniently located for exploring the beauty of the Snaefellsjokull National Park.

---

## U. Hotel Vík

**GPS:** (64.1347, -21.8776)

**Category:** *Hotels*

**Address:** *Síðumula 19, 108 Reykjavík.*



Hotel Vík

Hotel Vík is the ideal choice for business people and other visitors to the Reykjavík area looking for a restful and cosy place.

---

## V. Húsadalur

**Þórsmörk**

**GPS:** (63.69105, -19.540616)

**Category:** *Hiking, Buses, Camping*

**Tel.** 552 8300 **Web.** [http://www.hostel.is/default.asp?cat\\_id=738](http://www.hostel.is/default.asp?cat_id=738)



Húsadalur

Camping, Cabins, huts and a restaurant. From Húsadalur in Þórsmörk lies an array of hiking routes.

---

## W. Húsafell

**GPS:** (64.7, -20.883)

**Category:** *Swimming pools, Camping*



Húsafell

Camping, swimming pool etc. Popular attraction for locals and tourists.

---

## X. Icelandair Hotel Klaustur

**GPS:** (63.7888, -18.052)

**Category:** *Hotels*

**Address:** *Klausturvegi 6, 880 Kirkjubæjarklaustri.*



Icelandair Hotel Klaustur

In southern Iceland, one hour from Skaftafell National Park and the Vatnajökull glacier, the modern Hotel Klaustur is a great base for exploring the spectacular scenery of the south coast.

---

## Y. Landmannalaugar

**GPS:** (63.992, -19.062)

**Category:** Hot Natural Pools, Points of Interest, Hiking, Camping, Free attraction

**Web:** <http://www.landmannalaugar.info>



Landmannalaugar

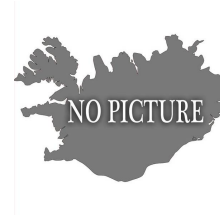
Famous highland area in Iceland. Hot springs, colourful mountains and hiking routes. Only accessible in summertime via 4x4 vehicles. Camping: 800ISK per person. Cabin space: 2.200ISK per person (reservation required)

---

## Z. Reykjavik Hostel

**GPS:** (64.14651, -21.8747)

**Category:** Camping, Hostels



Reykjavik Hostel

---

## 1. Sandártunga

**GPS:** (64.1066, -19.950783)

**Category:** Camping

**Tel.** 893 8889



Sandártunga

The camping site is located in Þjórsárdalur or the valley by the river Þjórsá. Beautiful area and there are many possible hikes to take from there.

---

## 2. Skaftafell National Park

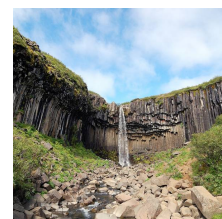
**Vatnajökull National Park - Skaftafell**

**GPS:** (64.0181, -17)

**Category:** Points of Interest, National parks, Camping

**Address:** Skaftafellsstofa, 785 Öräfi.

**Tel.** +354 470-8300 **Web.** <http://vatnajokulsthjodgardur.is>



Skaftafell National Park

Skaftafell National Park is very similar to some of the Alps. It's the biggest national park in Europe.

## Practical info

Country size: 103.000 sq km.

Language: Icelandic

Population: 320.000

Money: Icelandic krona (ISK)

Weather: Unpredictable

The weather in Iceland is completely unpredictable and can change very quickly. Also have warm clothes with you no matter how good the forecast is.

Alcohol: Only sold in State Alcohol store (ATVR), not in supermarkets. Alcohol quite expensive at bars.

---

## Travellers Reporting Service



ICE SAR runs what is known as the Travellers reporting service where people wandering into the highlands and wilderness can register and be safe in the knowledge that if they don't report to us at a given time they will be searched for. How does it work? You stop by at our office at Skógarhlíð 14, 105 Reykjavík, meet one of our staff from the SAR department and he will assist you. You leave your itinerary and we go through it together. Finally we decide when you are going to report to us that you have finished the trip and are back safe. If you fail to report we will start investigation and eventually launch a search for you. PLB's As a part of the reporting service we rent out McMurdo FastFind personal locator beacons that can be used to send out distress signal with your location on 406 mhz through the Cospas Sarsat system. The price for renting the beacons is 5 Euros pr. 24 hours or 25 Euros pr. week

Copyright 2012 - Spoticeland.com  
<http://www.spoticeland.com/>