



Your trip plan for Iceland
Hotels

Table of contents

Overview map of trip	3
A. CenterHotel Plaza	4
B. Country Hotel Hofdabrekka	4
C. Fosshotel Skaftafell	4
D. Hilton Reykjavik Nordica	4
E. Hotel Björk	5
F. Hotel Edda Akureyri	5
G. Hotel Hamar	5
H. Hotel Hallormsstadur	5
I. Hotel KEA	5
J. Hótel Stykkishólmur	6
K. Hotel Vík	6
L. Icelandair Hotel Klaustur	6
Practical info	7

Overview map of trip



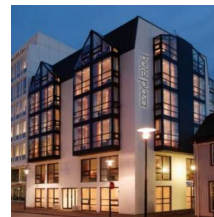
A. - CenterHotel Plaza	B. - Country Hotel Hofdabrekka	C. - Fosshotel Skaftafell	D. - Hilton Reykjavik Nordica
E. - Hotel Björk	F. - Hotel Edda Akureyri	G. - Hotel Hamar	H. - Hotel Hallormsstadur
I. - Hotel KEA	J. - Hótel Stykkishólmur	K. - Hotel Vík	L. - Icelandair Hotel Klaustur

A. CenterHotel Plaza

GPS: (64.148269, -21.9417)

Category: Hotels

Address: Aðalstræti 4, 101 Reykjavík.



CenterHotel Plaza

On the Ingólfstorg square in the heart of the old city is CenterHotel Plaza, perfectly situated for enjoying all that Reykjavik has to offer. Stay right next to numerous restaurants, shopping and nightlife.

B. Country Hotel Hofdabrekka

GPS: (63.42691, -18.90518)

Category: Hotels

Address: Höfðabrekku, 871 Vík.



Country Hotel Hofdabrekka

In the beautiful vicinity of Vík in Myrdal, occupying a scenic countryside location is Country Hotel Hofdabrekka, offering comfortable accommodation in 4 separate buildings.

C. Fosshotel Skaftafell

GPS: (63.99012, -16.89251)

Category: Hotels

Address: Freysnesi, 785 Örfæfi.



Fosshotel Skaftafell

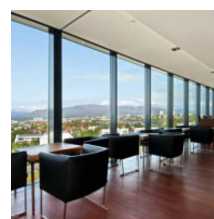
The amazing location of Fosshotel Skaftafell provides guests with stunning views of Iceland's highest mountain, Hvannadalshnjukur and the largest glacier in Europe, Vatnajökull.

D. Hilton Reykjavik Nordica

GPS: (64.139786, -21.88918)

Category: Hotels

Address: Sudurlandsbraut 2, 108 Reykjavík.



Hilton Reykjavik Nordica

Hilton Reykjavik Nordica is located in Reykjavik's business district, 15 minutes' walk from the city centre. It offers a free shuttle bus to central Reykjavik as well as free parking.

E. Hotel Björk

GPS: (64.14138, -21.9041)

Category: Hotels

Address: Brautarholt 22-24, 104 Reykjavík.



Hotel Björk

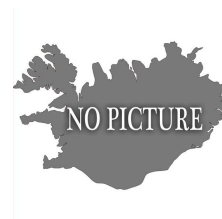
If you are looking for a centrally located hotel and would still prefer peace and privacy, Hotel Björk is the right choice for you.

F. Hotel Edda Akureyri

GPS: (65.67663, -18.0963)

Category: Hotels

Address: Hrafnagilstraeti, 600 Akureyri.



Hotel Edda Akureyri

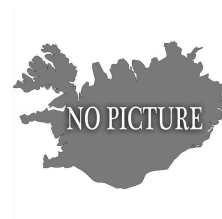
G. Hotel Hamar

GPS: (64.57358, -21.8779)

Category: Hotels

Address: Hamri, 310 Borgarnes.

Tel. 4336600



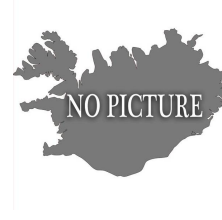
Hotel Hamar

Amid some of Iceland's most dramatic landscapes, the hotel is not only ideal for keen golf enthusiasts, but is also a great base for other leisure pursuits such as hiking, fishing and horse riding.

H. Hotel Hallormsstadur

GPS: (65.0934, -14.7459)

Category: Hotels



Hotel Hallormsstadur

I. Hotel KEA

GPS: (65.68064, -18.0895)

Category: Hotels

Address: Hafnarstræti 87-89, 600 Akureyri.



Hotel KEA

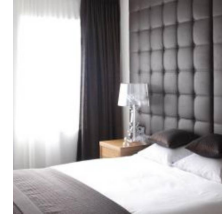
The best known hotel in Akureyri. It's situated in the town center.

J. Hótel Stykkishólmur

GPS: (65.07267, -22.72483)

Category: *Hotels*

Address: *Borgarbraut 8, 340 Stykkisholmur.*



Hótel Stykkishólmur

This seaside hotel in the fishing village of Stykkisholmur is conveniently located for exploring the beauty of the Snaefellsjokull National Park.

K. Hotel Vík

GPS: (64.1347, -21.8776)

Category: *Hotels*

Address: *Sidumula 19, 108 Reykjavík.*



Hotel Vík

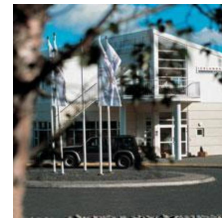
Hotel Vík is the ideal choice for business people and other visitors to the Reykjavík area looking for a restful and cosy place.

L. Icelandair Hotel Klaustur

GPS: (63.7888, -18.052)

Category: *Hotels*

Address: *Klausturvegi 6, 880 Kirkjubæjarklaustri.*



Icelandair Hotel Klaustur

In southern Iceland, one hour from Skaftafell National Park and the Vatnajokull glacier, the modern Hotel Klaustur is a great base for exploring the spectacular scenery of the south coast.

Practical info

Country size: 103.000 sq km.

Language: Icelandic

Population: 320.000

Money: Icelandic krona (ISK)

Weather: Unpredictable

The weather in Iceland is completely unpredictable and can change very quickly. Also have warm clothes with you no matter how good the forecast is.

Alcohol: Only sold in State Alcohol store (ATVR), not in supermarkets. Alcohol quite expensive at bars.

Copyright 2012 - Spoticeland.com
<http://www.spoticeland.com/>