



**Your trip plan for Iceland**  
**Points of Interest**

## Table of contents

Overview map of trip . . . . .	9
A. Akrafjall . . . . .	10
B. Akureyri Church . . . . .	10
C. Arnfinnsfjall . . . . .	10
D. Austurvöllur . . . . .	10
E. Álfsfell . . . . .	10
F. Ármannsfell . . . . .	10
G. Balafjöll . . . . .	11
H. Bláfell . . . . .	11
I. Bláfell . . . . .	11
J. Stóra Bláfell . . . . .	11
K. Bláfjallahorn . . . . .	11
L. Bláfjallahryggur . . . . .	11
M. Bláfjöll . . . . .	11
N. Bláhnúkur . . . . .	12
O. Blákollur . . . . .	12
P. Blátindur . . . . .	12
Q. Borgarfjall . . . . .	12
R. Botnssúlur . . . . .	12
S. Bónði . . . . .	12
T. Brennisteinsalda . . . . .	12
U. Bunga . . . . .	13
V. Búðaklettur . . . . .	13
W. Búrfell . . . . .	13
X. Búrfell . . . . .	13
Y. Búrfell . . . . .	13
Z. Búrfell . . . . .	13
1. Búrfell . . . . .	13
2. Búri . . . . .	14
3. Dalsfjall . . . . .	14
4. Dettifoss . . . . .	14
5. Drangey . . . . .	14
6. Driffell . . . . .	14
7. Drottning . . . . .	14
8. Dynjandi . . . . .	15
9. Einhyrningur . . . . .	15
a. Eldfell . . . . .	15
b. Eruption in Fimmvorduhals . . . . .	15
c. Esjan . . . . .	15
d. Eyjafjallajökull . . . . .	15

e. Fagradalsfjall . . . . .	16
f. Fagradals-Hagafell . . . . .	16
g. Fagradals-Vatnsfell . . . . .	16
h. Fagrifoss . . . . .	16
i. Festarfjall . . . . .	16
j. Fiskidalsfjall . . . . .	16
k. Fíflavallafjall . . . . .	16
l. Fjallið eina . . . . .	17
m. Flatey . . . . .	17
n. Geirsfjall . . . . .	17
o. Geitafell . . . . .	17
. Geitahöfði . . . . .	17
. Geysir . . . . .	17
. Glerárdalshnjúkur . . . . .	18
. Glymur . . . . .	18
. Goðafoss . . . . .	18
. Gráuhnúkar . . . . .	18
. Grímmannsfell . . . . .	18
. Grænadyngja . . . . .	18
. Grænaafjall . . . . .	18
. Grænavatnseggjar . . . . .	19
. Gullbringa . . . . .	19
. Gullfoss . . . . .	19
. Gvendarselshæð . . . . .	19
. Gýgjarsporshamar . . . . .	19
. Hafnarfjall . . . . .	19
. Hagafell . . . . .	19
. Hallgrímskirkja . . . . .	20
. Harpa . . . . .	20
. Hatta . . . . .	20
. Háafell . . . . .	20
. Háasúla . . . . .	20
. Há-Hrafnahlíð . . . . .	20
. Háifoss . . . . .	21
. Háihnúkur . . . . .	21
. Hegningarhúsið . . . . .	21
. Heiðartoppur . . . . .	21
. Hekla . . . . .	21
. Helgafell . . . . .	21
. Helgafell . . . . .	22

. Helgafell . . . . .	22
. Hellutindar . . . . .	22
. Herðubreið . . . . .	22
. Hestskarðshnjúkur . . . . .	22
. Hjálmur . . . . .	22
. Hlíðarfjall . . . . .	22
. Hljóðaklettur . . . . .	23
. Hlöðufell . . . . .	23
. Hólsfjall . . . . .	23
. Hrafnabjörg . . . . .	23
. Hrosshnjúkur . . . . .	23
. Hrutafell . . . . .	23
. Hrutafjall . . . . .	23
. Hrutfjallstindar . . . . .	24
. Húsafell . . . . .	24
. Húsfell . . . . .	24
. Hvalfell . . . . .	24
. Hvannadalshnúkur . . . . .	24
. Hverfandi . . . . .	24
. Hvítserkur . . . . .	24
. Höfði . . . . .	25
. Höfði . . . . .	25
. Ingólfsfjall . . . . .	25
. Innri-Sandhóll . . . . .	25
. Innstahæð . . . . .	25
. Jökulborg . . . . .	25
. Jökulsárlón . . . . .	26
. Kambsfjall . . . . .	26
. Kálfatindar . . . . .	26
. Kárahnjúkar . . . . .	26
. Keilir . . . . .	26
. Keilisbörn . . . . .	26
. Kerið . . . . .	26
. Kerling . . . . .	27
. Kerlingarhnúkur . . . . .	27
. Kirkjufell . . . . .	27
. Kista . . . . .	27
. Kistufjall . . . . .	27
. Kjölur . . . . .	27
. Kjölur . . . . .	27

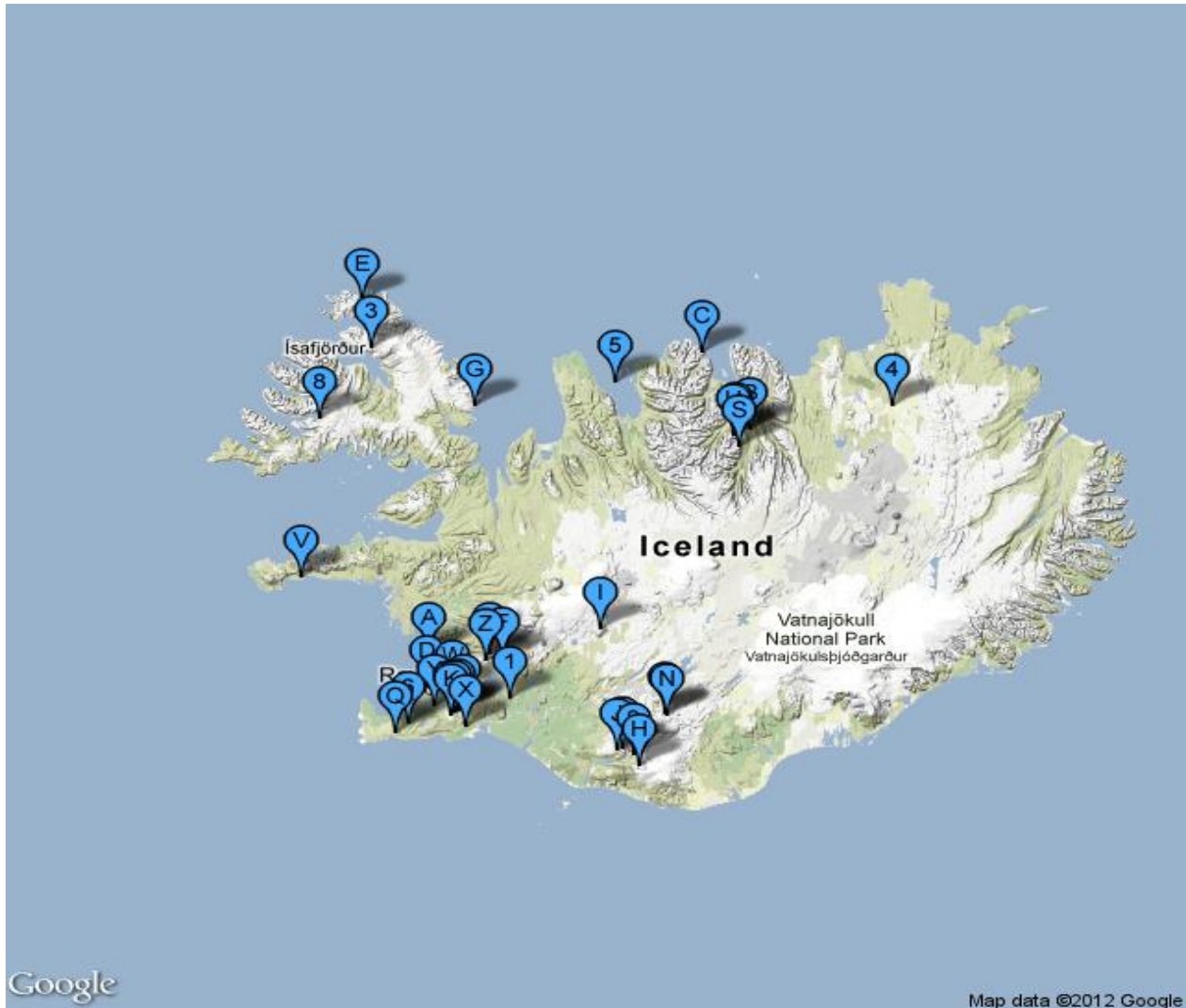
. Krafla . . . . .	28
. Kristínartindar . . . . .	28
. Kristjánssdalahorn . . . . .	28
. Krossfjöll . . . . .	28
. Kvígindisfell . . . . .	28
. Lakagígar . . . . .	28
. Lakahnúkar . . . . .	28
. Lambafell . . . . .	29
. Lambafell . . . . .	29
. Lambafellshnúkur . . . . .	29
. Lambhagi . . . . .	29
. Landakotskirkja . . . . .	29
. Landmannalaugar . . . . .	29
. Langhóll . . . . .	30
. Langihryggur . . . . .	30
. Lágafell . . . . .	30
. Lágafell . . . . .	30
. Lágaskarðshnúkur . . . . .	30
. Látrabjarg . . . . .	30
. Litla-Björnsfell . . . . .	31
. Litla-Reykjafell . . . . .	31
. Litla-Sandfell . . . . .	31
. Litla-Skógfell . . . . .	31
. Litlihrútur . . . . .	31
. Litli-Krummi . . . . .	31
. Litli-Meitill . . . . .	31
. Ljósufjöll . . . . .	32
. Lyngfell . . . . .	32
. Marúhorn . . . . .	32
. Mávahlíðar . . . . .	32
. Merardalshnúkar . . . . .	32
. Miðdegishnúkur . . . . .	32
. Miðfell . . . . .	32
. Múlafjall . . . . .	33
. Mýrarfjall . . . . .	33
. Mælifell . . . . .	33
. Námjafjall . . . . .	33
. Núpafjall . . . . .	33
. Ok . . . . .	33
. Ólafsfjarðarmúli . . . . .	33

. Pallahnjúkur . . . . .	34
. Pétursey . . . . .	34
. Rauðamelsfjall . . . . .	34
. Rauðhóll . . . . .	34
. Rauðuhnúkar . . . . .	34
. Reykjaborg . . . . .	34
. Reykjafell . . . . .	34
. Reykjafell . . . . .	35
. Reynisdrangar . . . . .	35
. Rjúpnadalahnúkar . . . . .	35
. Rjúpnafell . . . . .	35
. Sandfell . . . . .	35
. Sandfell . . . . .	35
. Sandfell . . . . .	35
. Sandfell . . . . .	36
. Sandfell . . . . .	36
. Sandfell . . . . .	36
. Sandfell . . . . .	36
. Sandfellshæð . . . . .	36
. Sauðadalahnúkar . . . . .	36
. Saxi . . . . .	36
. Selfell . . . . .	37
. Selfitafjall . . . . .	37
. Selfjall . . . . .	37
. Seljafjall . . . . .	37
. Seljalandsfoss . . . . .	37
. Símonarsker . . . . .	37
. Skaftafell National Park . . . . .	38
. Skálafell . . . . .	38
. Skálafell . . . . .	38
. Skálafell . . . . .	38
. Skála-Mælifell . . . . .	38
. Skessuhorn . . . . .	38
. Skjaldbreiður . . . . .	39
. Skógafoss . . . . .	39
. Slaga . . . . .	39
. Snaekollur . . . . .	39
. Snorragnúpur . . . . .	39
. Snókarfell . . . . .	39
. Snæfell . . . . .	39

. Snæfjall . . . . .	40
. Stakihnúkur . . . . .	40
. Stapatindur . . . . .	40
. Steinsfell . . . . .	40
. Stóra-Björnsfell . . . . .	40
. Stóra-Dímon . . . . .	40
. Stóra-Kóngsfell . . . . .	40
. Stóra-Sandfell . . . . .	41
. Stóra-Skógfell . . . . .	41
. Stórhöfði . . . . .	41
. Stórirrútur . . . . .	41
. Stóri-Krummi . . . . .	41
. Stóristallur . . . . .	41
. Strýta . . . . .	41
. Stöng . . . . .	42
. Suðurnámur . . . . .	42
. Sútur . . . . .	42
. Syðri súla . . . . .	42
. Syðstasúla . . . . .	42
. Sýlingafell . . . . .	42
. Sýrfell . . . . .	42
. The House of Parliament . . . . .	43
. Perlan . . . . .	43
. Tindur . . . . .	43
. Torfdalshryggur . . . . .	43
. Trölladyngja . . . . .	43
. Tröllafjall . . . . .	43
. Tröllafjall nyrðra . . . . .	44
. Tröllahyrna . . . . .	44
. Tröllatindur . . . . .	44
. Tröllatindur . . . . .	44
. Urðarfell . . . . .	44
. Úlfarsfell . . . . .	44
. Vaðalfjöll . . . . .	44
. Vaðalfjöll . . . . .	45
. Valahnúkar . . . . .	45
. Valahnúkur . . . . .	45
. Vatnshlíðarhorn . . . . .	45
. Vindbelgiarfjall . . . . .	45
. Vindbelgiarfjall . . . . .	45

. Vífilfell . . . . .	45
. Vífilsfell . . . . .	46
. Víkurhyrna . . . . .	46
. Vörðufell . . . . .	46
. Ytri súla . . . . .	46
. Ýma . . . . .	46
. Ýmir . . . . .	46
. Þorbjarnarfell . . . . .	46
. Þórðarfell . . . . .	47
. Þórólfsfell . . . . .	47
. Þríhnúkar . . . . .	47
. Þríhyrningur . . . . .	47
. Þríklakar . . . . .	47
. Þverfjall . . . . .	47
. Þyrill . . . . .	47
Practical info . . . . .	48
Travellers Reporting Service . . . . .	48

## Overview map of trip



A. - Akrafjall	B. - Akureyri Church	C. - Arnfinnsfjall	D. - Austurvöllur
E. - Álfsfell	F. - Ármannsfell	G. - Balafjöll	H. - Bláfell
I. - Bláfell	J. - Stóra Bláfell	K. - Bláfjallahorn	L. - Bláfjallahryggur
M. - Bláfjöll	N. - Bláhnúkur	O. - Blákollur	P. - Blátindur
Q. - Borgarfjall	R. - Botnssúlur	S. - Bónði	T. - Brennisteinsalda
U. - Bunga	V. - Búðaklettur	W. - Búrfell	X. - Búrfell
Y. - Búrfell	Z. - Búrfell	1. - Búrfell	2. - Búri
3. - Dalsfjall	4. - Dettifoss	5. - Drangey	6. - Driffell
7. - Drottning	8. - Dynjandi	9. - Einhyrningur	

---

## A. Akrafjall

**GPS:** (64.3491529, -21.9057176)

**Category:** Mountains in Iceland

None

---

## B. Akureyri Church

**GPS:** (65.679951, -18.090695)

**Category:** Points of Interest, Free attraction

**Address:** Eyrarlandsvegi, 600 Akureyri.

**Tel.** 462 7700



Akureyri Church

Dominant symbol for Akureyri.

---

## C. Arnfinnsfjall

*Ólafsfirði*

**GPS:** (66.1132963, -18.6446925)

**Category:** Mountains in Iceland

None

---

## D. Austurvöllur

**GPS:** (64.14712, -21.9393)

**Category:** Points of Interest, Free attraction

**Address:** 101 Reykjavík.



Austurvöllur

The place to be in good weather. Many cafes and restaurants surround it. This is where Icelanders protest, as it's where the Parliament is located.

---

## E. Álfsfell

**GPS:** (66.4076144, -22.6912774)

**Category:** Mountains in Iceland

None

---

## F. Ármannsfell

**GPS:** (64.3216146, -21.0178729)

**Category:** Mountains in Iceland

None

---

## **G. Balafjöll**

*GPS: (65.814391, -21.3614846)*

*Category: Mountains in Iceland*

None

---

## **H. Bláfell**

*Pórsmörk*

*GPS: (63.6642063, -19.3918508)*

*Category: Mountains in Iceland*

None

---

## **I. Bláfell**

*GPS: (64.4973361, -19.8536471)*

*Category: Mountains in Iceland*

None

---

## **J. Stóra Bláfell**

*Tindfjöllum*

*GPS: (63.7632885, -19.661511)*

*Category: Mountains in Iceland*

None

---

## **K. Bláfjallahorn**

*GPS: (63.9765845, -21.6364225)*

*Category: Mountains in Iceland*

None

---

## **L. Bláfjallahryggur**

*GPS: (64.0088757, -21.5644964)*

*Category: Mountains in Iceland*

None

---

## **M. Bláfjöll**

*GPS: (63.994353, -21.5998587)*

*Category: Mountains in Iceland*

None

---

## **N. Bláhnúkur**

*GPS: (63.9768023, -19.0692093)*

*Category: Mountains in Iceland*

None

---

## **O. Blákollur**

*GPS: (64.0366209, -21.4925703)*

*Category: Mountains in Iceland*

None

---

## **P. Blátindur**

*GPS: (65.6484286, -18.2674651)*

*Category: Mountains in Iceland*

None

---

## **Q. Borgarfjall**

*GPS: (63.8699837, -22.2953212)*

*Category: Mountains in Iceland*

None

---

## **R. Botnssúlur**

*GPS: (64.3517553, -21.1752481)*

*Category: Mountains in Iceland*

None

---

## **S. Bóndi**

*GPS: (65.5759847, -18.2196592)*

*Category: Mountains in Iceland*

None

---

## **T. Brennisteinsalda**

*GPS: (63.9809363, -19.0955754)*

*Category: Mountains in Iceland*

None

---

## U. Bunga

*GPS: (65.6435943, -18.2896338)*

*Category: Mountains in Iceland*

None

---

## V. Búðaklettur

*GPS: (64.81118, -23.4239529)*

*Category: Mountains in Iceland*

None

---

## W. Búrfell

*GPS: (64.1207245, -21.6265184)*

*Category: Mountains in Iceland*

None

---

## X. Búrfell

*GPS: (63.9122517, -21.4684808)*

*Category: Mountains in Iceland*

None

---

## Y. Búrfell

*GPS: (64.0338434, -21.8317386)*

*Category: Mountains in Iceland*

None

---

## Z. Búrfell

*Þingvöllum*

*GPS: (64.307712, -21.215599)*

*Category: Mountains in Iceland*

None

---

## 1. Búrfell

*Úlfjótuvatni*

*GPS: (64.0841598, -20.9363037)*

*Category: Mountains in Iceland*

None

---

## 2. Búri

*Tindfjöllum*

*GPS: (63.7761625, -19.6061887)*

*Category: Mountains in Iceland*

None

---

## 3. Dalsfjall

*GPS: (66.140734, -22.581501)*

*Category: Mountains in Iceland*

None

---

## 4. Dettifoss

*GPS: (65.8121, -16.399533)*

*Category: Points of Interest, Free attraction*



Dettifoss

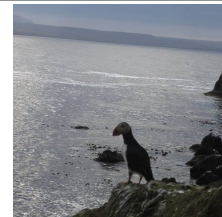
Dettifoss is Iceland's greatest and most majestic waterfall. It is also rated as Europe's most powerful waterfall, based on its magnitude, 45 meter high and 100 meter wide.

---

## 5. Drangey

*GPS: (65.945333, -19.688833)*

*Category: Points of Interest*



Drangey

Drangey or Drang Isle, with its steep sea cliffs, towers majestically in the midst of Skagafjörður fjord in Iceland. Daily boat trips available from Sauðárkrókur and Reykir.

---

## 6. Driffell

*GPS: (63.9288096, -22.148579)*

*Category: Mountains in Iceland*

None

---

## 7. Drottning

*GPS: (63.9995459, -21.6439756)*

*Category: Mountains in Iceland*

None

---

## 8. Dynjandi

*GPS: (65.736875, -23.208975)*

*Category: Points of Interest, Free attraction*



Dynjandi

Dynjandi in the bottom of Arnarfjörður fjord is the biggest waterfall in the West Fjords and one of the most impressive ones in the whole of Iceland

---

## 9. Einhyrningur

*GPS: (63.73853, -19.4732)*

*Category: Mountains in Iceland*

---

### a. Eldfell

*GPS: (63.4325334, -20.2476477)*

*Category: Mountains in Iceland*

None

---

### b. Eruption in Fimmvorduhals

*GPS: (63.64006706, -19.47210788)*

*Category: Points of Interest*

*Web. <http://translate.google.com/translate?hl=en=is=en=http%3A%2F%2Fwww.almanna>*



Eruption in Fimmvorduhals

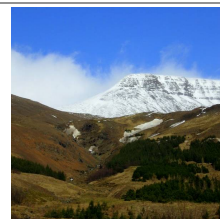
Started on March 20th. 2010. Activity ended on April 12th 2010. The crack went directly over small part of the famous hiking path Fimmvörðuháls.

---

### c. Esjan

*GPS: (64.23275, -21.7113)*

*Category: Mountains in Iceland*



Esjan

The mountain watching over the capital.

---

### d. Eyjafjallajökull

*Hámundur*

*GPS: (63.61903, -19.6113)*

*Category: Mountains in Iceland*



Eyjafjallajökull

The famous volcanic Eyjafjallajökull, not suitable for hiking.

---

### **e. Fagradalsfjall**

*Reykjanesi*

*GPS: (63.8937125, -22.2726619)*

*Category: Mountains in Iceland*

None

---

### **f. Fagradals-Hagafell**

*GPS: (63.9263199, -22.2527775)*

*Category: Mountains in Iceland*

None

---

### **g. Fagradals-Vatnsfell**

*GPS: (63.9204342, -22.2725185)*

*Category: Mountains in Iceland*

None

---

### **h. Fagrifoss**

*GPS: (63.870678, -18.24442)*

*Category: Points of Interest, Free attraction*



Fagrifoss

Fagrifoss is a distinctive waterfall on the way to Laki (or Lakagígur) along a very rough and rugged 4wd road.

---

### **i. Festarfjall**

*GPS: (63.8584143, -22.334975)*

*Category: Mountains in Iceland*

None

---

### **j. Fiskidalsfjall**

*GPS: (63.8593219, -22.3651874)*

*Category: Mountains in Iceland*

None

---

### **k. Fíflavallafjall**

*GPS: (63.9346182, -22.0721898)*

*Category: Mountains in Iceland*

None

---

---

## **l. Fjallið eina**

**GPS:** (63.9789034, -21.5671861)

**Category:** *Mountains in Iceland*

None

---

## **m. Flatey**

**GPS:** (65.37177, -22.92829)

**Category:** *Points of Interest*

**Tel.** 555 7788



Flatey

Flatey is the second largest island in Breiðafjörður, still relatively small (two kilometer long) and very beautiful. The island is mostly flat (hence its name, meaning flat island in Icelandic), with scarcely any hills. The island is accessible via the ferry Baldur from Stykkishólmur and Brjánslækur.

---

## **n. Geirsfjall**

**GPS:** (66.2176211, -22.8570175)

**Category:** *Mountains in Iceland*

None

---

## **o. Geitafell**

**GPS:** (63.9374876, -21.5152628)

**Category:** *Mountains in Iceland*

None

---

## **. Geitahöfði**

**GPS:** (63.9091876, -21.9755444)

**Category:** *Mountains in Iceland*

None

---

## **. Geysir**

**GPS:** (64.3104927, -20.303034)

**Category:** *Points of Interest, Free attraction*



Geysir

Geysir is the first geyser ever described. The English word geyser (a spouting hot spring) derives from Geysir. Very popular destination for tourists in Iceland.

---

## . Glerárdalshnjúkur

*GPS: (65.5553248, -18.3298092)*

*Category: Mountains in Iceland*

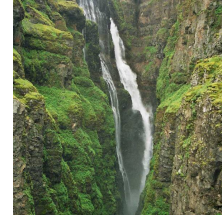
None

---

## . Glymur

*GPS: (64.38324802, -21.2707328)*

*Category: Points of Interest, Free attraction*



Glymur

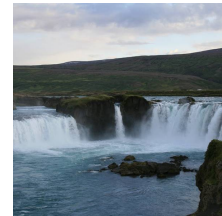
The waterfall Glymur, with a cascade of 196 m, is the highest waterfall of Iceland. From the parking area there is a 30-60min hiking to see the waterfall.

---

## . Goðafoss

*GPS: (65.684083, -17.5488666)*

*Category: Points of Interest, Free attraction*



Goðafoss

Goðafoss is a wide 12m tall waterfall on the Skjálfandaflljót river known for its role in Icelandic history.

---

## . Gráuhnúkar

*GPS: (64.0151354, -21.4346624)*

*Category: Mountains in Iceland*

None

---

## . Grímmannsfell

*GPS: (64.1663171, -21.5448076)*

*Category: Mountains in Iceland*

None

---

## . Grænadyngja

*GPS: (63.9420091, -22.0884976)*

*Category: Mountains in Iceland*

None

---

## . Grænafjall

*GPS: (64.1960656, -17.3594941)*

*Category: Mountains in Iceland*

None

---

## . Grænavatnseggjar

*GPS: (63.92466, -22.0984539)*

*Category: Mountains in Iceland*

None

---

## . Gullbringa

*GPS: (63.9055636, -21.9597516)*

*Category: Mountains in Iceland*

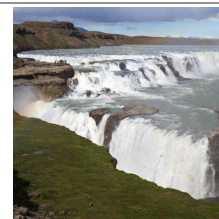
None

---

## . Gullfoss

*GPS: (64.32786, -20.12133)*

*Category: Points of Interest, Free attraction*



Gullfoss

Gullfoss is one of the most popular tourist attractions in the country. With a 105-foot double-cascade, Gullfoss is by far Europe's most powerful waterfall.

---

## . Gvendarselshæð

*GPS: (64.0139907, -21.8691954)*

*Category: Mountains in Iceland*

None

---

## . Gýgjarsporshamar

*GPS: (66.2587378, -22.3640547)*

*Category: Mountains in Iceland*

None

---

## . Hafnarfjall

*GPS: (64.4798713, -21.955981)*

*Category: Mountains in Iceland*

---

## . Hagafell

*GPS: (63.8668083, -22.4067294)*

*Category: Mountains in Iceland*

None

---

## . Hallgrímskirkja

**GPS:** (64.141943, -21.92694)

**Category:** Points of Interest, Family Children

**Address:** Hallgrímstorgi 1, 101 Reykjavík.

**Web.** <http://hallgrimskirkja.is/>



Hallgrímskirkja

One of the major landmarks in Iceland. It's possible to go up to the 75m tower in this magnificent church. Admission 500 ISK for the tower, 100 ISK for children.

---

## . Harpa

**GPS:** (64.15036, -21.9323)

**Category:** Points of Interest

**Address:** 101 Reykjavík.

**Web.** <http://www.harpa.is/>



Harpa

New landmark in the city. Concert and conference center opened in May 2011.

---

## . Hatta

*Vík*

**GPS:** (63.43951, -19.00507)

**Category:** Mountains in Iceland

---

## . Háafell

**GPS:** (66.1464271, -22.6354026)

**Category:** Mountains in Iceland

None

---

## . Háasúla

**GPS:** (64.3581849, -21.1467073)

**Category:** Mountains in Iceland

None

---

## . Há-Hrafnahlíð

**GPS:** (63.8677912, -22.3366916)

**Category:** Mountains in Iceland

None

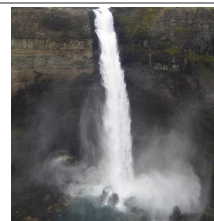
---

---

## . Háifoss

*GPS: (64.20695, -19.68436666)*

*Category: Points of Interest, Free attraction*



Háifoss

Háifoss waterfall in Thjorsardalur valley in southern Iceland is the second highest waterfall in the country with a 122 m vertical drop.

---

## . Háihnúkur

*GPS: (64.3185531, -21.9498254)*

*Category: Mountains in Iceland*

None

---

## . Hegningarhúsið

*GPS: (64.14546, -21.9315)*

*Category: Points of Interest*

*Address: Skólavörðustíg 9, 101 Reykjavík.*



Hegningarhúsið

The oldest prison in Iceland (1874) and can house 16 inmates. It's still being used and located in the city center, just meters away from the nightlife.

---

## . Heiðartoppur

*GPS: (63.9594075, -21.6410574)*

*Category: Mountains in Iceland*

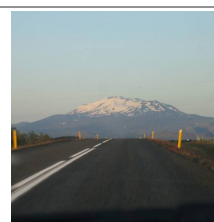
None

---

## . Hekla

*GPS: (64.0103896, -19.5927873)*

*Category: Mountains in Iceland*



Hekla

Last eruption was in the year 2000.

---

## . Helgafell

*GPS: (64.1734225, -21.659649)*

*Category: Mountains in Iceland*

None

---

## **. Helgafell**

*GPS: (64.0086536, -21.8508465)*

*Category: Mountains in Iceland*

None

---

## **. Helgafell**

*Vestmannaeyjum*

*GPS: (63.4292, -20.260183)*

*Category: Mountains in Iceland*

---

## **. Hellutindar**

*GPS: (63.9492473, -21.9830975)*

*Category: Mountains in Iceland*

None

---

## **. Herðubreið**

*GPS: (65.1743968, -16.3456825)*

*Category: Mountains in Iceland*

None

---

## **. Hestskarðshjúkur**

*GPS: (66.1337039, -18.8520543)*

*Category: Mountains in Iceland*

None

---

## **. Hjálmur**

*GPS: (64.1509034, -21.5398294)*

*Category: Mountains in Iceland*

None

---

## **. Hlíðarfjall**

*GPS: (65.6519915, -18.2583026)*

*Category: Mountains in Iceland*

None

---

## . Hljóðaklettur

*GPS: (65.9507, -16.5286)*

*Category: Points of Interest, Free attraction*



Hljóðaklettur

A part of the Jökulsárgljúfur National Park.

---

## . Hlöðufell

*GPS: (64.4201005, -20.5431478)*

*Category: Mountains in Iceland*

None

---

## . Hólsfjall

*GPS: (65.8171123, -21.502323)*

*Category: Mountains in Iceland*

None

---

## . Hrafnabjörg

*GPS: (64.272277, -20.9233171)*

*Category: Mountains in Iceland*

None

---

## . Hrosshnjúkur

*GPS: (65.6171498, -18.3453251)*

*Category: Mountains in Iceland*

None

---

## . Hrutafell

*GPS: (63.9294887, -22.0624051)*

*Category: Mountains in Iceland*

None

---

## . Hrutafjall

*GPS: (65.5573631, -18.388146)*

*Category: Mountains in Iceland*

None

---

---

## . Hrútfjallstindar

*GPS: (64.04967, -16.74335)*

*Category: Mountains in Iceland*

---

## . Húsafell

*GPS: (63.8526657, -22.3760021)*

*Category: Mountains in Iceland*

None

---

## . Húsfell

*GPS: (64.0280674, -21.7971882)*

*Category: Mountains in Iceland*

None

---

## . Hvalfell

*GPS: (64.3870951, -21.210857)*

*Category: Mountains in Iceland*

None

---

## . Hvannadalshnúkur

*GPS: (64.0141308, -16.6772805)*

*Category: Mountains in Iceland*



Hvannadalshnúkur

The highest peak in Iceland.

---

## . Hverfandi

*GPS: (65.5651891, -18.2323556)*

*Category: Mountains in Iceland*

None

---

## . Hvítserkur

*GPS: (65.60616, -20.63735)*

*Category: Points of Interest, Free attraction*



Hvítserkur

Located on the seashore it's a magnificent 15 meter high thin rock standing alone.

---

## . Höfði

*Reykjanesi*

*GPS: (63.8680877, -22.2254833)*

*Category: Mountains in Iceland*

None

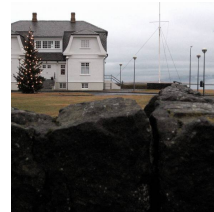
---

## . Höfði

*GPS: (64.146547, -21.90636)*

*Category: Points of Interest*

*Address: Borgartúni, 105 Reykjavík.*



Höfði

Originally built for the French consul and home for the British ambassador during WWII. The house became world famous in 1986 when U.S. president Reagan and Soviet president Gorbachov met here mark the end to the cold war.

---

## . Ingólfsfjall

*Inghóll*

*GPS: (63.9970615, -21.0358182)*

*Category: Mountains in Iceland*

---

## . Innri-Sandhóll

*GPS: (63.9016428, -22.3245036)*

*Category: Mountains in Iceland*

None

---

## . Innstahæð

*GPS: (63.8696813, -22.3794353)*

*Category: Mountains in Iceland*

None

---

## . Jökulborg

*GPS: (65.5801072, -18.3835003)*

*Category: Mountains in Iceland*

None

---

## . Jökulsárlón

*GPS: (64.0482, -16.18011)*

*Category: Points of Interest, Free attraction*



Jökulsárlón

The best known glacier lake in Iceland. A real beauty. Two James Bond movies have partly been shot here.

---

## . Kambsfjall

*GPS: (65.6273861, -18.3428768)*

*Category: Mountains in Iceland*

None

---

## . Kálfatindar

*GPS: (66.4544776, -22.415686)*

*Category: Mountains in Iceland*

None

---

## . Kárahnjúkar

*GPS: (64.9461562, -15.7756443)*

*Category: Mountains in Iceland*

None

---

## . Keilir

*GPS: (63.9412338, -22.1722383)*

*Category: Mountains in Iceland*

None

---

## . Keilisbörn

*GPS: (63.9478149, -22.1750149)*

*Category: Mountains in Iceland*

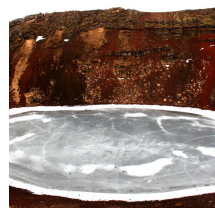
None

---

## . Kerið

*GPS: (64.0417, -20.8851)*

*Category: Points of Interest*



Kerið

A volcanic crater lake, worth a stop while driving the golden triangle.

---

## **. Kerling**

*GPS: (65.557284, -18.2544598)*

*Category: Mountains in Iceland*

None

---

## **. Kerlingarhnúkur**

*GPS: (63.9713873, -21.6194281)*

*Category: Mountains in Iceland*

None

---

## **. Kirkjufell**

*GPS: (64.9410355, -23.3056896)*

*Category: Mountains in Iceland*

None

---

## **. Kista**

*GPS: (65.6377316, -18.3163782)*

*Category: Mountains in Iceland*

None

---

## **. Kistufjall**

*GPS: (65.5681102, -18.3880512)*

*Category: Mountains in Iceland*

None

---

## **. Kjölur**

*GPS: (66.2397028, -22.5522594)*

*Category: Mountains in Iceland*

None

---

## **. Kjölur**

*GPS: (66.1540621, -22.7045822)*

*Category: Mountains in Iceland*

None

---

## . Krafla

*GPS: (65.7336691, -16.7836643)*

*Category: Mountains in Iceland*

None

---

## . Kristínartindar

*GPS: (64.0629775, -16.9308264)*

*Category: Mountains in Iceland*

None

---

## . Kristjánsdalahorn

*GPS: (64.0030826, -21.7433676)*

*Category: Mountains in Iceland*

None

---

## . Krossfjöll

*GPS: (63.945145, -21.4248788)*

*Category: Mountains in Iceland*

None

---

## . Kvígindisfell

*GPS: (64.4079487, -21.0628257)*

*Category: Mountains in Iceland*

None

---

## . Lakagígar

*GPS: (64.070133, -18.236483)*

*Category: Points of Interest, Free attraction*



Lakagígar

The 25 km long crater row called Lakagígar was created during a relatively short, intensive, and catastrophic eruption between the 8th of June 1783 and February 1874.

---

## . Lakahnúkar

*GPS: (63.9992614, -21.3792158)*

*Category: Mountains in Iceland*

None

---

## . Lambafell

**GPS:** (64.0158123, -21.4720846)

**Category:** Mountains in Iceland

None

---

## . Lambafell

**GPS:** (63.9562287, -22.0803414)

**Category:** Mountains in Iceland

None

---

## . Lambafellshnúkur

**GPS:** (64.026114, -21.4648748)

**Category:** Mountains in Iceland

None

---

## . Lambhagi

**GPS:** (63.9438188, -21.9506535)

**Category:** Mountains in Iceland

None

---

## . Landakotskirkja

**GPS:** (64.14757, -21.9485)

**Category:** Points of Interest, Free attraction

**Address:** 101 Reykjavik.



Landakotskirkja

The Catholic church in Reykjavik

---

## . Landmannalaugar

**GPS:** (63.992, -19.062)

**Category:** Hot Natural Pools, Points of Interest, Hiking, Camping, Free attraction

**Web:** <http://www.landmannalaugar.info>



Landmannalaugar

Famous highland area in Iceland. Hot springs, colourful mountains and hiking routes. Only accessible in summertime via 4x4 vehicles. Camping: 800ISK per person. Cabin space: 2.200ISK per person (reservation required)

---

## . Langhóll

*Fagradalsfjall*

*GPS: (63.9069981, -22.2675403)*

*Category: Mountains in Iceland*

None

---

## . Langihryggur

*Reykjanesi*

*GPS: (63.8711874, -22.2668537)*

*Category: Mountains in Iceland*

None

---

## . Lágafell

*GPS: (64.3490418, -20.9511079)*

*Category: Mountains in Iceland*

None

---

## . Lágafell

*GPS: (63.8808682, -22.5404536)*

*Category: Mountains in Iceland*

None

---

## . Lágaskarðshnúkur

*GPS: (64.0174668, -21.4085699)*

*Category: Mountains in Iceland*

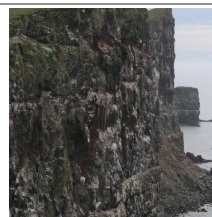
None

---

## . Látrabjarg

*GPS: (65.50428, -24.5298)*

*Category: Points of Interest, Free attraction*



Látrabjarg

Magnificent bird cliff on the far west end of Iceland. The cliffs can be visited very closely and host thousands of birds including famous Puffin.

---

## **. Litla-Björnsfell**

*GPS: (64.5009171, -20.7734444)*

*Category: Mountains in Iceland*

None

---

## **. Litla-Reykjafell**

*GPS: (64.0306245, -21.4126897)*

*Category: Mountains in Iceland*

None

---

## **. Litla-Sandfell**

*GPS: (63.9586382, -21.4629876)*

*Category: Mountains in Iceland*

None

---

## **. Litla-Skógfell**

*GPS: (63.9241919, -22.3668417)*

*Category: Mountains in Iceland*

None

---

## **. Litlihrútur**

*GPS: (63.9159059, -22.2122654)*

*Category: Mountains in Iceland*

None

---

## **. Litli-Krummi**

*GPS: (65.5880335, -18.2140894)*

*Category: Mountains in Iceland*

None

---

## **. Litli-Meitill**

*GPS: (63.9750946, -21.4391256)*

*Category: Mountains in Iceland*

None

---

## **. Ljósufjöll**

*GPS: (64.9197396, -22.5878464)*

*Category: Mountains in Iceland*

None

---

## **. Lyngfell**

*GPS: (63.8587925, -22.3208987)*

*Category: Mountains in Iceland*

None

---

## **. Maríuhorn**

*GPS: (66.2516323, -22.8042149)*

*Category: Mountains in Iceland*

None

---

## **. Mávahlíðar**

*GPS: (63.958217, -22.0390591)*

*Category: Mountains in Iceland*

None

---

## **. Merardalshnúkar**

*GPS: (63.9003531, -22.2440227)*

*Category: Mountains in Iceland*

None

---

## **. Miðdegishnúkur**

*GPS: (63.9206606, -22.0345959)*

*Category: Mountains in Iceland*

None

---

## **. Miðfell**

*Pingvöllum*

*GPS: (64.1865896, -21.0401298)*

*Category: Mountains in Iceland*

None

---

## **. Múlafjall**

*Hvalfirði*

*GPS: (64.3737097, -21.3367478)*

*Category: Mountains in Iceland*

None

---

## **. Mýrarfjall**

*GPS: (66.1367064, -22.6350593)*

*Category: Mountains in Iceland*

None

---

## **. Mælifell**

*GPS: (64.1015804, -21.1986326)*

*Category: Mountains in Iceland*

None

---

## **. Námjafjall**

*GPS: (65.6401475, -16.821119)*

*Category: Mountains in Iceland*

None

---

## **. Núpafjall**

*GPS: (63.9954232, -21.2497831)*

*Category: Mountains in Iceland*

None

---

## **. Ok**

*GPS: (64.5951312, -20.8801382)*

*Category: Mountains in Iceland*

None

---

## **. Ólafsfjarðarmúli**

*GPS: (66.0794793, -18.5712756)*

*Category: Mountains in Iceland*

None

---

## **. Pallahnjúkur**

*GPS: (66.1214667, -18.8455748)*

*Category: Mountains in Iceland*

None

---

## **. Pétursey**

*GPS: (63.46581, -19.2715)*

*Category: Mountains in Iceland*

---

## **. Rauðamelsfjall**

*GPS: (64.9068401, -22.3748003)*

*Category: Mountains in Iceland*

None

---

## **. Rauðhóll**

*GPS: (63.9697897, -21.5251291)*

*Category: Mountains in Iceland*

None

---

## **. Rauðuhnúkar**

*GPS: (64.0220374, -21.6141066)*

*Category: Mountains in Iceland*

None

---

## **. Reykjaborg**

*GPS: (64.142728, -21.6331692)*

*Category: Mountains in Iceland*

None

---

## **. Reykjafell**

*GPS: (64.1579379, -21.6316682)*

*Category: Mountains in Iceland*

None

---

## . Reykjafell

*GPS: (64.027392, -21.3905454)*

*Category: Mountains in Iceland*

None

---

## . Reynisdrangar

*GPS: (63.406126, -18.9895)*

*Category: Points of Interest, Free attraction*



Reynisdrangar

If you drive south, don't miss this spot.

---

## . Rjúpnadalahnúkar

*GPS: (64.0410698, -21.6366848)*

*Category: Mountains in Iceland*

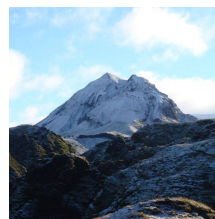
---

## . Rjúpnafell

*Pórsmörk*

*GPS: (63.69652, -19.40959)*

*Category: Mountains in Iceland*



Rjúpnafell

---

## . Sandfell

*GPS: (64.8874623, -22.5954378)*

*Category: Mountains in Iceland*

None

---

## . Sandfell

*Reykjanesi*

*GPS: (63.8724028, -22.562083)*

*Category: Mountains in Iceland*

None

---

## . Sandfell

*GPS: (64.0517377, -21.6579709)*

*Category: Mountains in Iceland*

None

---

---

## **. Sandfell**

*Norðurlandi Eystra*

*GPS: (66.1142829, -16.3360208)*

*Category: Mountains in Iceland*

None

---

## **. Sandfell**

*Pingvöllum*

*GPS: (64.1110065, -21.1810204)*

*Category: Mountains in Iceland*

None

---

## **. Sandfell**

*GPS: (63.8817691, -22.2083172)*

*Category: Mountains in Iceland*

None

---

## **. Sandfell**

*GPS: (64.9298881, -15.7977002)*

*Category: Mountains in Iceland*

None

---

## **. Sandfellshæð**

*GPS: (63.8607588, -22.5754726)*

*Category: Mountains in Iceland*

None

---

## **. Sauðadalahnúkar**

*GPS: (64.0283528, -21.5293058)*

*Category: Mountains in Iceland*

None

---

## **. Saxi**

*Tindfjöllum*

*GPS: (63.7851537, -19.622199)*

*Category: Mountains in Iceland*

None

---

## . Selfell

*GPS: (64.910896, -22.2962253)*

*Category: Mountains in Iceland*

None

---

## . Selfitafjall

*GPS: (64.0907081, -20.0402238)*

*Category: Mountains in Iceland*

None

---

## . Selfjall

*Sandskeiði*

*GPS: (64.0639783, -21.665009)*

*Category: Mountains in Iceland*

None

---

## . Seljafjall

*GPS: (66.2243351, -22.7725601)*

*Category: Mountains in Iceland*

None

---

## . Seljalandsfoss

*GPS: (63.616, -19.993)*

*Category: Points of Interest, Free attraction*



Seljalandsfoss

Seljalandsfoss is one of the most famous waterfalls of Iceland. It is 65m high.

---

## . Símonarsker

*GPS: (63.9013517, -19.1479672)*

*Category: Mountains in Iceland*

None

---

## **. Skaftafell National Park**

*Vatnajökull National Park - Skaftafell*

*GPS: (64.0181, -17)*

*Category: Points of Interest, National parks, Camping*

*Address: Skaftafellsstofa, 785 Öraefi.*

*Tel. +354 470-8300 Web. <http://vatnajokulsthjodgardur.is>*



Skaftafell National Park

Skaftafell National Park is very similar to some of the Alps. It's the biggest national park in Europe.

---

## **. Skálafell**

*GPS: (63.8132255, -22.6843059)*

*Category: Mountains in Iceland*

None

---

## **. Skálafell**

*Mosfellsdal*

*GPS: (64.2398, -21.46134)*

*Category: Mountains in Iceland*

---

## **. Skálafell**

*Hellisheiði*

*GPS: (63.9866913, -21.3218809)*

*Category: Mountains in Iceland*

None

---

## **. Skála-Mælifell**

*Reykjanesi*

*GPS: (63.8483534, -22.2681987)*

*Category: Mountains in Iceland*

None

---

## **. Skessuhorn**

*GPS: (64.4742, -21.7264)*

*Category: Mountains in Iceland*

---

## . Skjaldbreiður

*GPS: (64.4087495, -20.7500613)*

*Category: Mountains in Iceland*

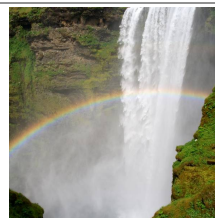
None

---

## . Skógafoss

*GPS: (63.52652, -19.288558)*

*Category: Points of Interest, Hiking*



Skógafoss

Beautiful waterfall. If you are hiking over Fimmvorduhals (where the eruption was in April 2010) then this is a starting or ending point.

---

## . Slaga

*GPS: (63.8583387, -22.2942912)*

*Category: Mountains in Iceland*

None

---

## . Snaekollur

*GPS: (64.6426465, -19.2418424)*

*Category: Mountains in Iceland*

None

---

## . Snorragnúpur

*GPS: (65.5801856, -18.37108)*

*Category: Mountains in Iceland*

None

---

## . Snókarfell

*GPS: (63.9723065, -22.107552)*

*Category: Mountains in Iceland*

None

---

## . Snæfell

*GPS: (64.7993465, -15.5605962)*

*Category: Mountains in Iceland*

None

---

---

## **. Snæfjall**

*GPS: (66.1644698, -22.7933311)*

*Category: Mountains in Iceland*

None

---

## **. Stakihnúkur**

*GPS: (64.0070115, -21.4511419)*

*Category: Mountains in Iceland*

None

---

## **. Stapatindur**

*GPS: (63.9355233, -22.0059285)*

*Category: Mountains in Iceland*

None

---

## **. Steinsfell**

*GPS: (65.5790097, -18.3622626)*

*Category: Mountains in Iceland*

None

---

## **. Stóra-Björnsfell**

*GPS: (64.4965014, -20.7116218)*

*Category: Mountains in Iceland*

None

---

## **. Stóra-Dímon**

*GPS: (63.6758764, -19.9426823)*

*Category: Mountains in Iceland*

None

---

## **. Stóra-Kóngsfell**

*GPS: (64.0033836, -21.6590818)*

*Category: Mountains in Iceland*

None

---

## **. Stóra-Sandfell**

*GPS: (63.9885734, -21.3879705)*

*Category: Mountains in Iceland*

None

---

## **. Stóra-Skógfell**

*GPS: (63.8969604, -22.3744571)*

*Category: Mountains in Iceland*

None

---

## **. Stórhöfði**

*GPS: (64.0258567, -21.9312268)*

*Category: Mountains in Iceland*

None

---

## **. Stórihrútur**

*GPS: (63.8880407, -22.2460827)*

*Category: Mountains in Iceland*

None

---

## **. Stóri-Krummi**

*GPS: (65.5894222, -18.2125348)*

*Category: Mountains in Iceland*

None

---

## **. Stóristallur**

*GPS: (65.5453213, -18.3582918)*

*Category: Mountains in Iceland*

None

---

## **. Strýta**

*GPS: (65.6444844, -18.3068701)*

*Category: Mountains in Iceland*

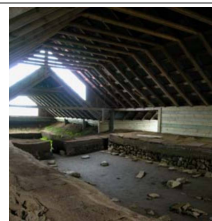
None

---

## . Stöng

*GPS: (64.1513, -19.75076)*

*Category: Points of Interest, Free attraction*



Stöng

Stöng is known for being the home of the prominent farmer and warrior Gaukur Trandilsson.

---

## . Suðurnámur

*GPS: (64.0001002, -19.0846864)*

*Category: Mountains in Iceland*

None

---

## . Súgur

*GPS: (63.9020204, -22.5394237)*

*Category: Mountains in Iceland*

None

---

## . Syðri súla

*GPS: (65.6033323, -18.1994952)*

*Category: Mountains in Iceland*

None

---

## . Syðstasúla

*GPS: (64.3370186, -21.1617824)*

*Category: Mountains in Iceland*

None

---

## . Sýlingafell

*GPS: (63.8832864, -22.4044978)*

*Category: Mountains in Iceland*

None

---

## . Sýrfell

*GPS: (63.8383646, -22.6613033)*

*Category: Mountains in Iceland*

None

---

---

## . The House of Parliament

**GPS:** (64.1468, -21.9395)

**Category:** Points of Interest

**Address:** Kirkjustræti , 101 Reykjavík.

**Tel.** 563 0500 **Web.** <http://althingi.is/>



The House of Parliament

The action can be watched from above when there is an ongoing parliament meeting. The house was built in 1880-1881.

---

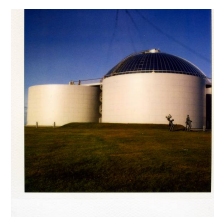
## . Perlan

**GPS:** (64.129203, -21.91871)

**Category:** Points of Interest, Museum, Fine Dining

**Address:** Öskjuhlíð,

**Tel.** 562 0200



Perlan

A place offering various attractions. Fine dining in a revolving restaurant. Splendid view over the city and Saga Museum is also located in Perlan.

---

## . Tindur

*Tindfjöllum*

**GPS:** (63.7582855, -19.5860529)

**Category:** Mountains in Iceland

---

## . Torfdalshryggur

**GPS:** (64.143343, -21.5714151)

**Category:** Mountains in Iceland

None

---

## . Trölladyngja

**GPS:** (63.9461845, -22.0912485)

**Category:** Mountains in Iceland

None

---

## . Tröllafjall

**GPS:** (65.5941667, -18.3409794)

**Category:** Mountains in Iceland

None

---

---

## **. Tröllafjall nyrðra**

*GPS: (65.6076385, -18.3501514)*

*Category: Mountains in Iceland*

None

---

## **. Tröllahyrna**

*GPS: (65.5846822, -18.3422937)*

*Category: Mountains in Iceland*

None

---

## **. Tröllatindur**

*GPS: (65.5826662, -18.3523909)*

*Category: Mountains in Iceland*

None

---

## **. Tröllatindur**

*Við Hrafnabjörg*

*GPS: (64.2740474, -20.8850399)*

*Category: Mountains in Iceland*

None

---

## **. Urðarfell**

*GPS: (64.8724099, -22.5974468)*

*Category: Mountains in Iceland*

None

---

## **. Úlfarsfell**

*GPS: (64.1470391, -21.7102197)*

*Category: Mountains in Iceland*

None

---

## **. Vaðalfjöll**

*GPS: (65.5823596, -22.0778051)*

*Category: Mountains in Iceland*

None

---

---

## **. Vaðalfjöll**

*GPS: (63.88657, -19.1536427)*

*Category: Mountains in Iceland*

None

---

## **. Valahnúkar**

*GPS: (64.0212103, -21.8467077)*

*Category: Mountains in Iceland*

None

---

## **. Valahnúkur**

*GPS: (63.6833193, -19.5311811)*

*Category: Mountains in Iceland*

---

## **. Vatnshlíðarhorn**

*GPS: (63.9561068, -21.934689)*

*Category: Mountains in Iceland*

None

---

## **. Vindbelgiarfjall**

*GPS: (64.3153438, -20.3053987)*

*Category: Mountains in Iceland*

None

---

## **. Vindbelgiarfjall**

*GPS: (65.6240507, -17.0690702)*

*Category: Mountains in Iceland*

None

---

## **. Vífilfell**

*GPS: (64.0386747, -21.5563764)*

*Category: Mountains in Iceland*

None

---

## **. Vífilsfell**

*GPS: (64.0386775, -21.5563775)*

*Category: Mountains in Iceland*

None

---

## **. Víkurhyrna**

*GPS: (66.1210323, -18.7466821)*

*Category: Mountains in Iceland*

None

---

## **. Vörðufell**

*GPS: (64.078395, -20.5391655)*

*Category: Mountains in Iceland*

None

---

## **. Ytri súla**

*GPS: (65.6112123, -18.1890734)*

*Category: Mountains in Iceland*

None

---

## **. Ýma**

*Tindfjöllum*

*GPS: (63.7842325, -19.5523522)*

*Category: Mountains in Iceland*

None

---

## **. Ýmir**

*Tindfjöllum*

*GPS: (63.7862361, -19.5663315)*

*Category: Mountains in Iceland*

None

---

## **. Þorbjarnarfell**

*Reykjanesi*

*GPS: (63.8642374, -22.4390018)*

*Category: Mountains in Iceland*

None

---

## **. Þórðarfell**

*GPS: (63.8911441, -22.5222575)*

*Category: Mountains in Iceland*

None

---

## **. Þórólfsfell**

*GPS: (64.4524158, -20.5081343)*

*Category: Mountains in Iceland*

None

---

## **. Þríhnúkar**

*GPS: (63.9961594, -21.7030271)*

*Category: Mountains in Iceland*

None

---

## **. Þríhyrningur**

*Snæfellsjökull*

*GPS: (64.8036887, -23.7804529)*

*Category: Mountains in Iceland*

---

## **. Þríklakar**

*GPS: (65.5707104, -18.226914)*

*Category: Mountains in Iceland*

None

---

## **. Þverfjall**

*GPS: (66.0905162, -18.7542272)*

*Category: Mountains in Iceland*

None

---

## **. Þyrill**

*Hvalfirði*

*GPS: (64.39277, -21.40619)*

*Category: Mountains in Iceland*

## Practical info

Country size: 103.000 sq km.

Language: Icelandic

Population: 320.000

Money: Icelandic krona (ISK)

Weather: Unpredictable

The weather in Iceland is completely unpredictable and can change very quickly. Also have warm clothes with you no matter how good the forecast is.

Alcohol: Only sold in State Alcohol store (ATVR), not in supermarkets. Alcohol quite expensive at bars.

---

## Travellers Reporting Service



ICE SAR runs what is known as the Travellers reporting service where people wandering into the highlands and wilderness can register and be safe in the knowledge that if they don't report to us at a given time they will be searched for. How does it work? You stop by at our office at Skógarhlíð 14, 105 Reykjavík, meet one of our staff from the SAR department and he will assist you. You leave your itinerary and we go through it together. Finally we decide when you are going to report to us that you have finished the trip and are back safe. If you fail to report we will start investigation and eventually launch a search for you. PLB's As a part of the reporting service we rent out McMurdo FastFind personal locator beacons that can be used to send out distress signal with your location on 406 mhz through the Cospas Sarsat system. The price for renting the beacons is 5 Euros pr. 24 hours or 25 Euros pr. week

Copyright 2012 - Spoticeland.com  
<http://www.spoticeland.com/>